

## IT Essentials 5.0

### 5.3.1.7 Lab - Task Manager (Managing Processes) in Windows XP

#### Introduction

Print and complete this lab.

In this lab, you will explore Task Manager and manage processes from within Task Manager.

#### Recommended Equipment

The following equipment is required for this exercise:

- A computer running Windows XP Professional

#### Step 1

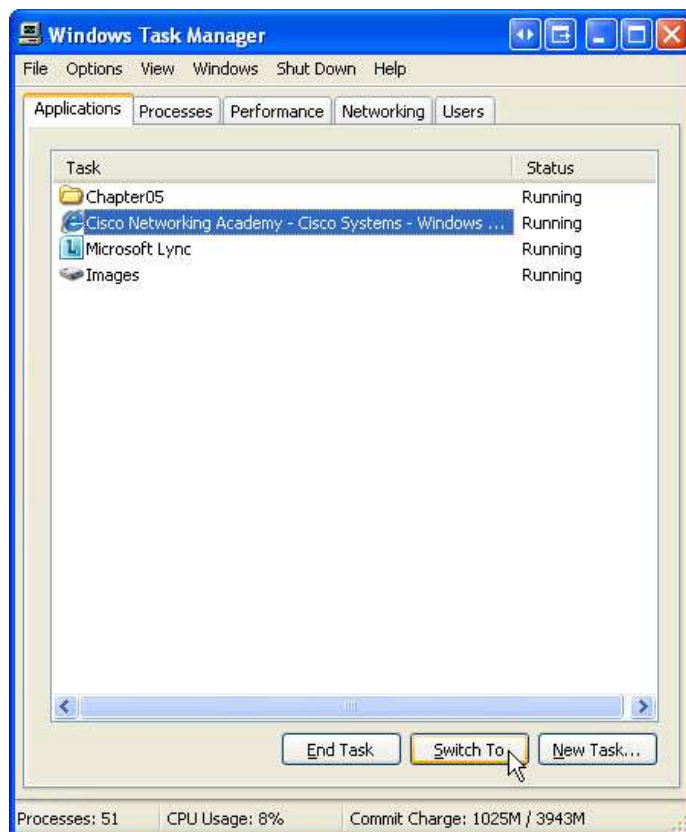
Log on to Windows as an administrator.

Open a browser and a folder.

Click on the desktop and press **Ctrl-Alt-Delete**.

Click the Task Manager button if the Windows Security dialog box is displayed.

Click the **Applications** tab.



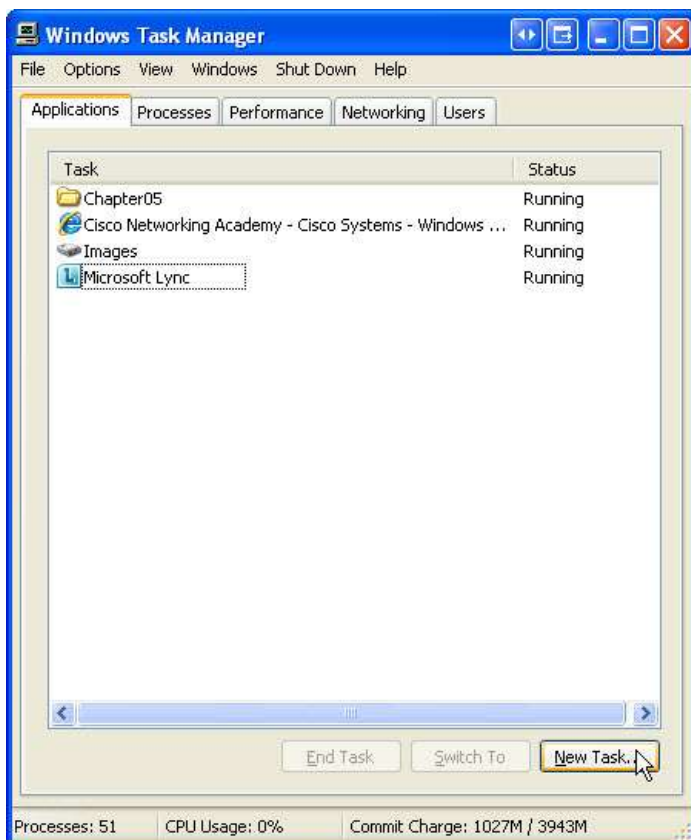
Select the open browser and then click **Switch To**.

What happened to the browser?

What happened to Windows Task Manager?

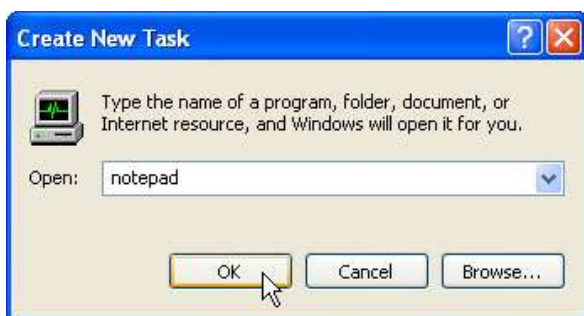
Open Task Manager, press **Ctrl-Alt-Delete**.

Click the **Applications** tab.



Click **New Task**.

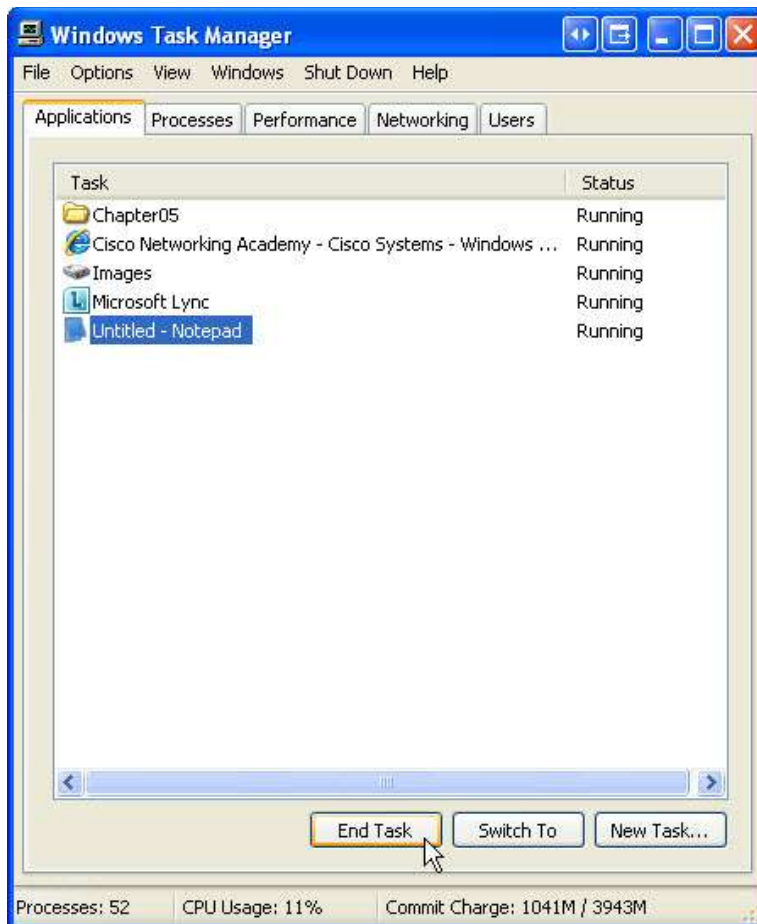
The "Create New Task" window opens.



In the Open field type **notepad** and then click **OK**.

What happens?

Navigate back to Windows Task Manager.

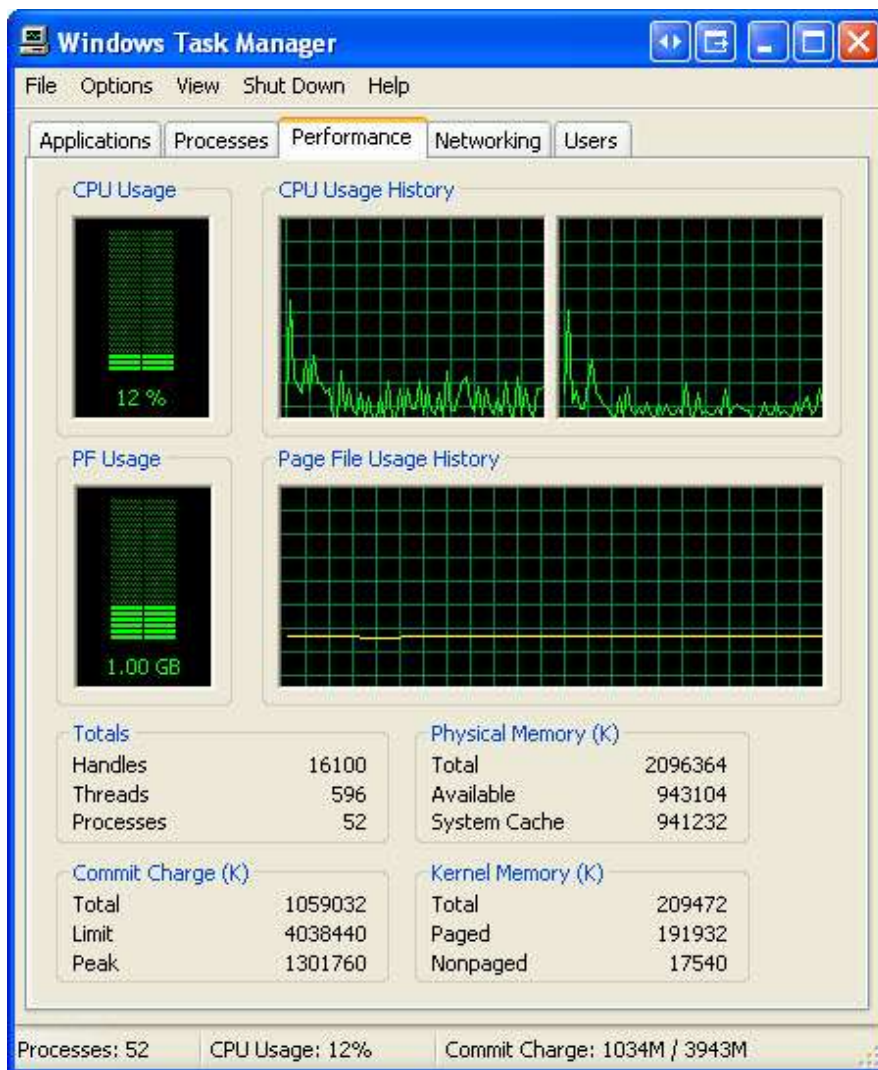


Select **Notepad** and then click **End Task**.

What happens?

## Step 2

Click the **Performance** tab.



How many Threads are running?

How many Processes are running?

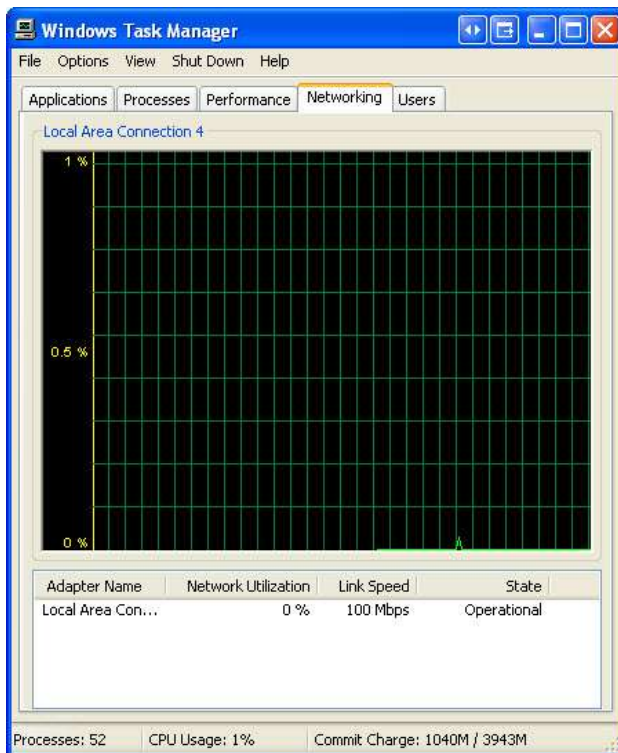
What is the Total Physical Memory (K)?

What is the Available Physical Memory (K)?

How much Physical Memory (K) is being used by the system?

### Step 3

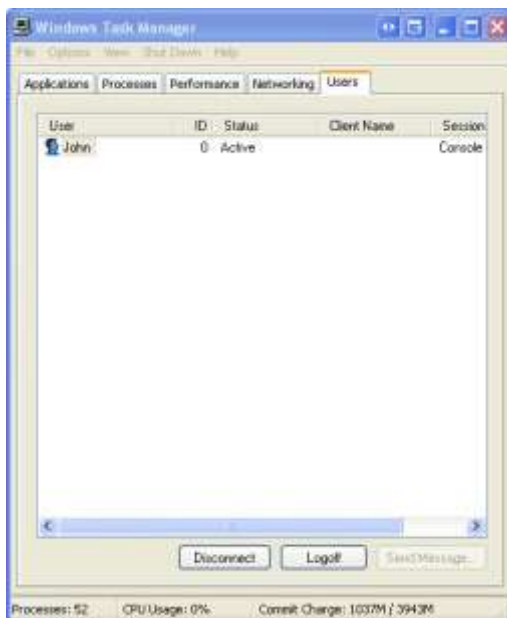
Click the **Networking** tab.



What is the Link Speed?

#### Step 4

Click the **Users** tab.



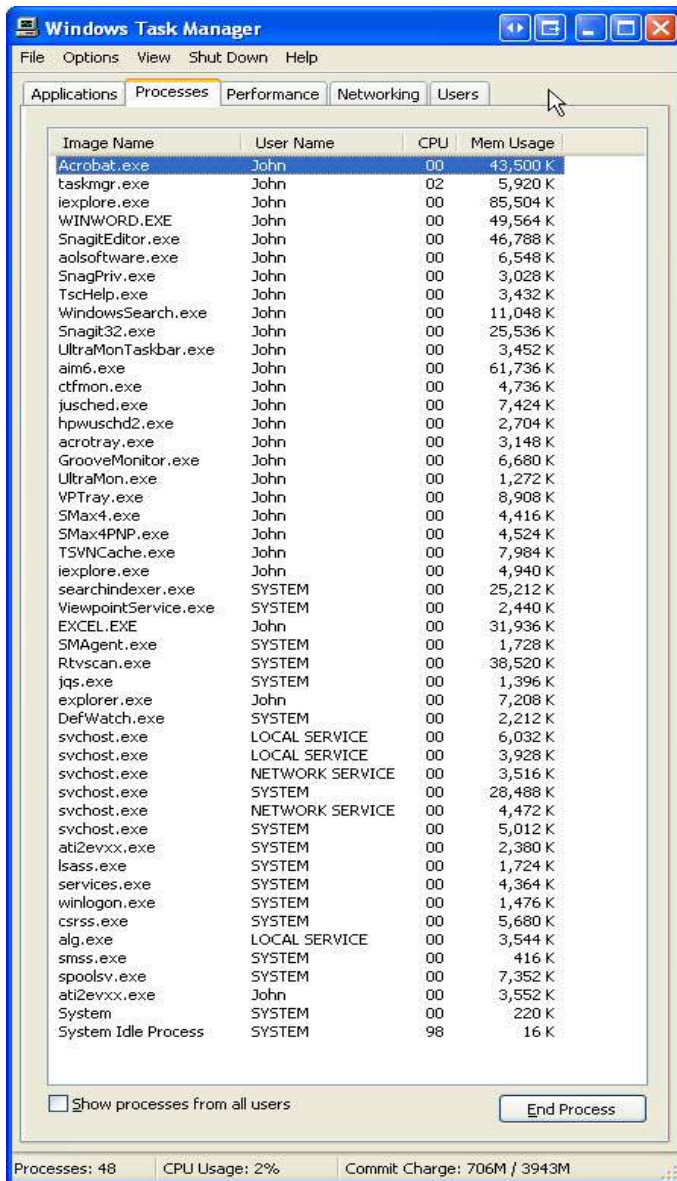
List all users and their Status.

What actions can you perform on the user?

## Step 5

Click the **Processes** tab.

Double-click the border around the tabs.



Windows Task Manager is now in compact mode.

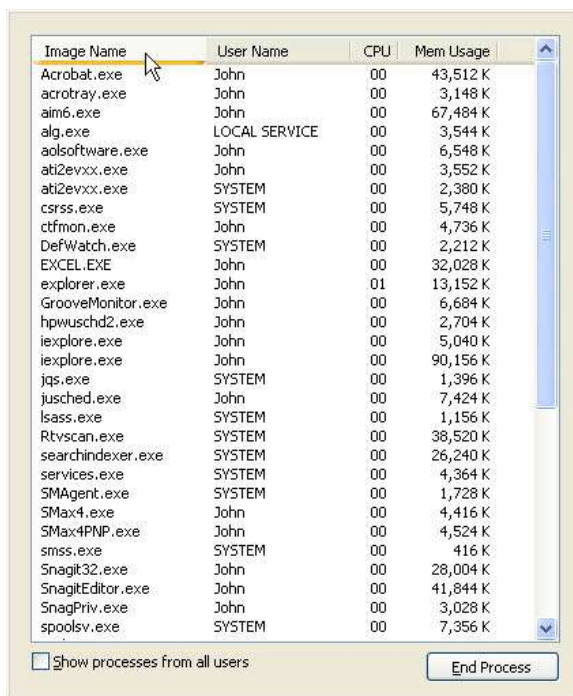


Image Name	User Name	CPU	Mem Usage
Acrobat.exe	John	00	43,512 K
acrotray.exe	John	00	3,148 K
aim6.exe	John	00	67,484 K
alg.exe	LOCAL SERVICE	00	3,544 K
aolsoftware.exe	John	00	6,548 K
ati2evxx.exe	John	00	3,552 K
ati2evxx.exe	SYSTEM	00	2,380 K
csrss.exe	SYSTEM	00	5,748 K
ctfmon.exe	John	00	4,736 K
DefWatch.exe	SYSTEM	00	2,212 K
EXCEL.EXE	John	00	32,028 K
explorer.exe	John	01	13,152 K
GrooveMonitor.exe	John	00	6,684 K
hpwuschd2.exe	John	00	2,704 K
iexplore.exe	John	00	5,040 K
iexplore.exe	John	00	90,156 K
jqs.exe	SYSTEM	00	1,396 K
jsched.exe	John	00	7,424 K
lsass.exe	SYSTEM	00	1,156 K
Rtvsan.exe	SYSTEM	00	38,520 K
searchindexer.exe	SYSTEM	00	26,240 K
services.exe	SYSTEM	00	4,364 K
SMAgent.exe	SYSTEM	00	1,728 K
SMax4.exe	John	00	4,416 K
SMax4PNP.exe	John	00	4,524 K
smss.exe	SYSTEM	00	416 K
Snagit32.exe	John	00	28,004 K
SnagitEditor.exe	John	00	41,844 K
SnagitPriv.exe	John	00	3,028 K
spoolsv.exe	SYSTEM	00	7,356 K

☐ Show processes from all users End Process

Click **Image Name**.

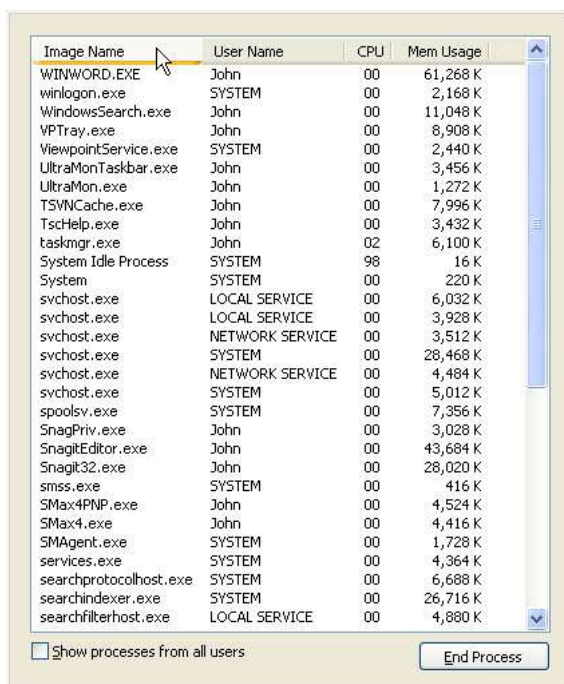


Image Name	User Name	CPU	Mem Usage
WINWORD.EXE	John	00	61,268 K
winlogon.exe	SYSTEM	00	2,168 K
WindowsSearch.exe	John	00	11,048 K
VPTray.exe	John	00	8,908 K
ViewpointService.exe	SYSTEM	00	2,440 K
UltraMonTaskbar.exe	John	00	3,456 K
UltraMon.exe	John	00	1,272 K
TSVNCache.exe	John	00	7,996 K
TscHelp.exe	John	00	3,432 K
taskmgr.exe	John	02	6,100 K
System Idle Process	SYSTEM	98	16 K
System	SYSTEM	00	220 K
svchost.exe	LOCAL SERVICE	00	6,032 K
svchost.exe	LOCAL SERVICE	00	3,928 K
svchost.exe	NETWORK SERVICE	00	3,512 K
svchost.exe	SYSTEM	00	28,468 K
svchost.exe	NETWORK SERVICE	00	4,484 K
svchost.exe	SYSTEM	00	5,012 K
spoolsv.exe	SYSTEM	00	7,356 K
SnagitPriv.exe	John	00	3,028 K
SnagitEditor.exe	John	00	43,684 K
Snagit32.exe	John	00	28,020 K
smss.exe	SYSTEM	00	416 K
SMax4PNP.exe	John	00	4,524 K
SMax4.exe	John	00	4,416 K
SMAgent.exe	SYSTEM	00	1,728 K
services.exe	SYSTEM	00	4,364 K
searchprotocolhost.exe	SYSTEM	00	6,688 K
searchindexer.exe	SYSTEM	00	26,716 K
searchfilterhost.exe	LOCAL SERVICE	00	4,880 K

☐ Show processes from all users End Process

Click **Image Name** again.

What effect does this have on the columns?

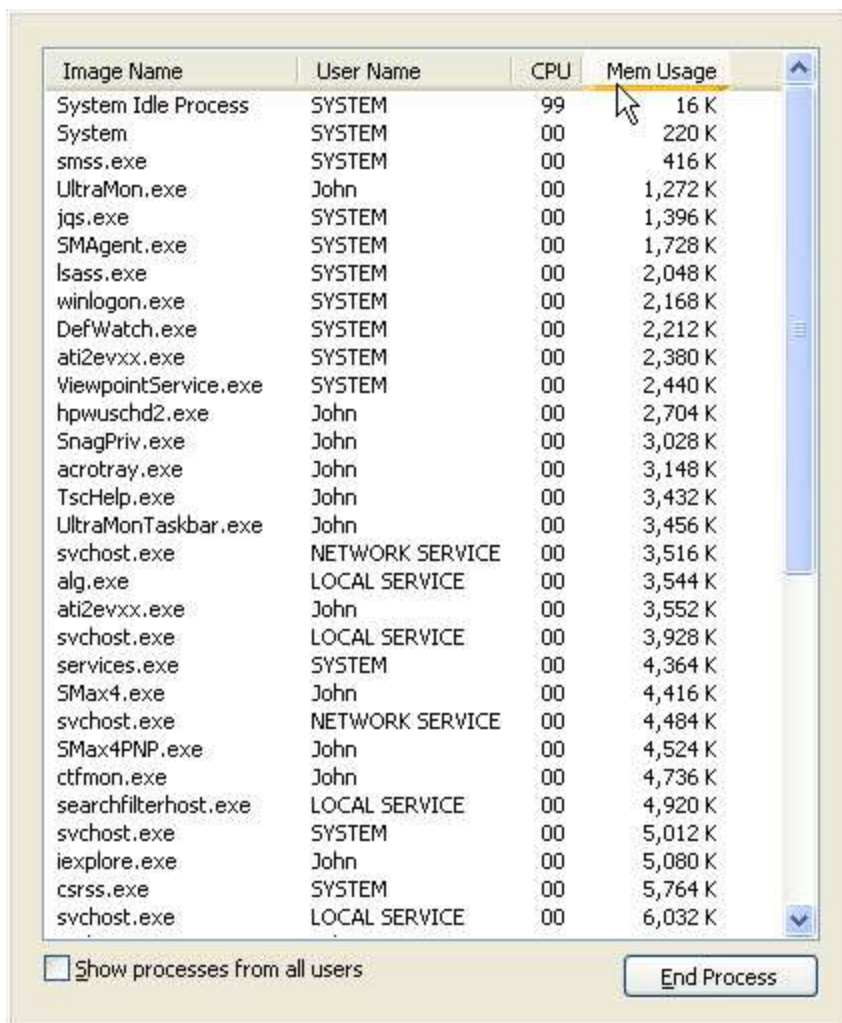


Image Name	User Name	CPU	Mem Usage
System Idle Process	SYSTEM	99	16 K
System	SYSTEM	00	220 K
smss.exe	SYSTEM	00	416 K
UltraMon.exe	John	00	1,272 K
jqs.exe	SYSTEM	00	1,396 K
SMAgent.exe	SYSTEM	00	1,728 K
lsass.exe	SYSTEM	00	2,048 K
winlogon.exe	SYSTEM	00	2,168 K
DefWatch.exe	SYSTEM	00	2,212 K
ati2evxx.exe	SYSTEM	00	2,380 K
ViewpointService.exe	SYSTEM	00	2,440 K
hpwuschd2.exe	John	00	2,704 K
SnagPriv.exe	John	00	3,028 K
acrotray.exe	John	00	3,148 K
TscHelp.exe	John	00	3,432 K
UltraMonTaskbar.exe	John	00	3,456 K
svchost.exe	NETWORK SERVICE	00	3,516 K
alg.exe	LOCAL SERVICE	00	3,544 K
ati2evxx.exe	John	00	3,552 K
svchost.exe	LOCAL SERVICE	00	3,928 K
services.exe	SYSTEM	00	4,364 K
SMax4.exe	John	00	4,416 K
svchost.exe	NETWORK SERVICE	00	4,484 K
SMax4PNP.exe	John	00	4,524 K
ctfmon.exe	John	00	4,736 K
searchfilterhost.exe	LOCAL SERVICE	00	4,920 K
svchost.exe	SYSTEM	00	5,012 K
iexplore.exe	John	00	5,080 K
csrss.exe	SYSTEM	00	5,764 K
svchost.exe	LOCAL SERVICE	00	6,032 K

☐ Show processes from all users

End Process

Click **Mem Usage**.

What affect does this have on the columns?

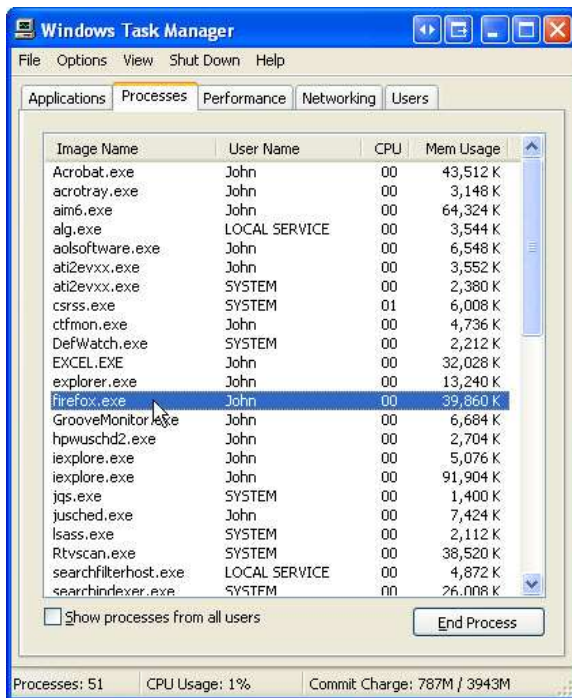
Double-click the outside border again for tabs mode.

## Step 6

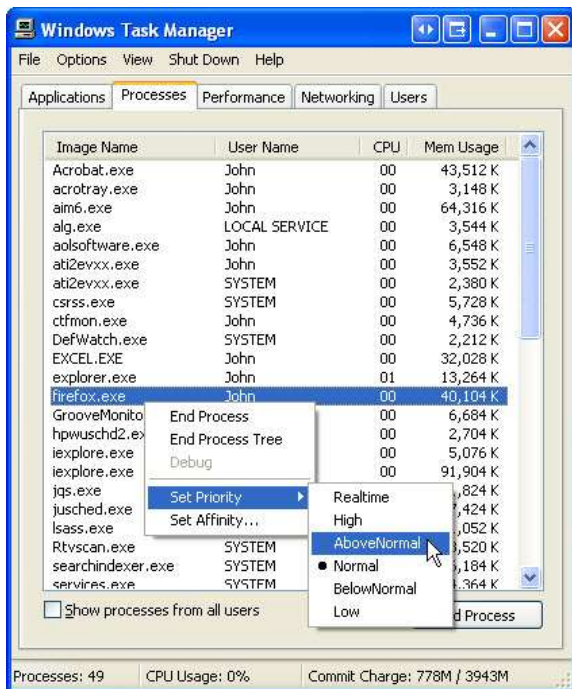
Open a browser.

**Note:** Firefox is used in this lab. However, any browser will work. Just substitute your browser name whenever you see the word Firefox.

Return to the Windows Task Manager.



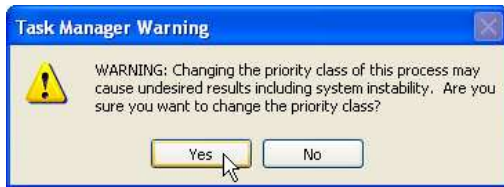
Click **Image Name** so the list is in alphabetical order and select **firefox.exe**.



Right-click **firefox.exe** > **Set Priority**.

What is the default priority for the browser?

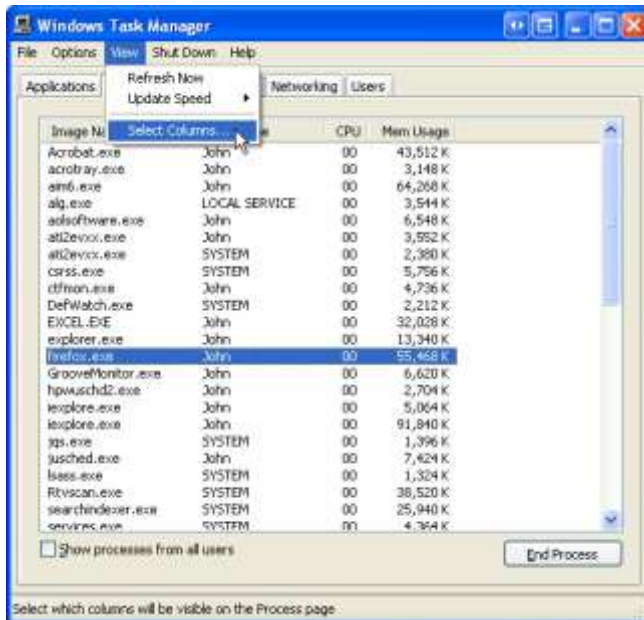
Set the priority to **Above Normal**.



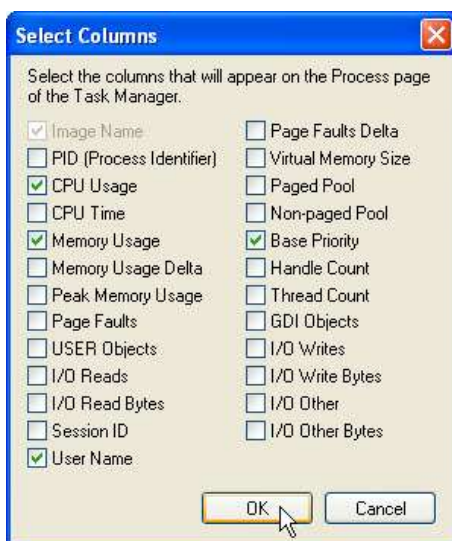
Click **Yes** in the Task Manager Warning window.

## Step 7

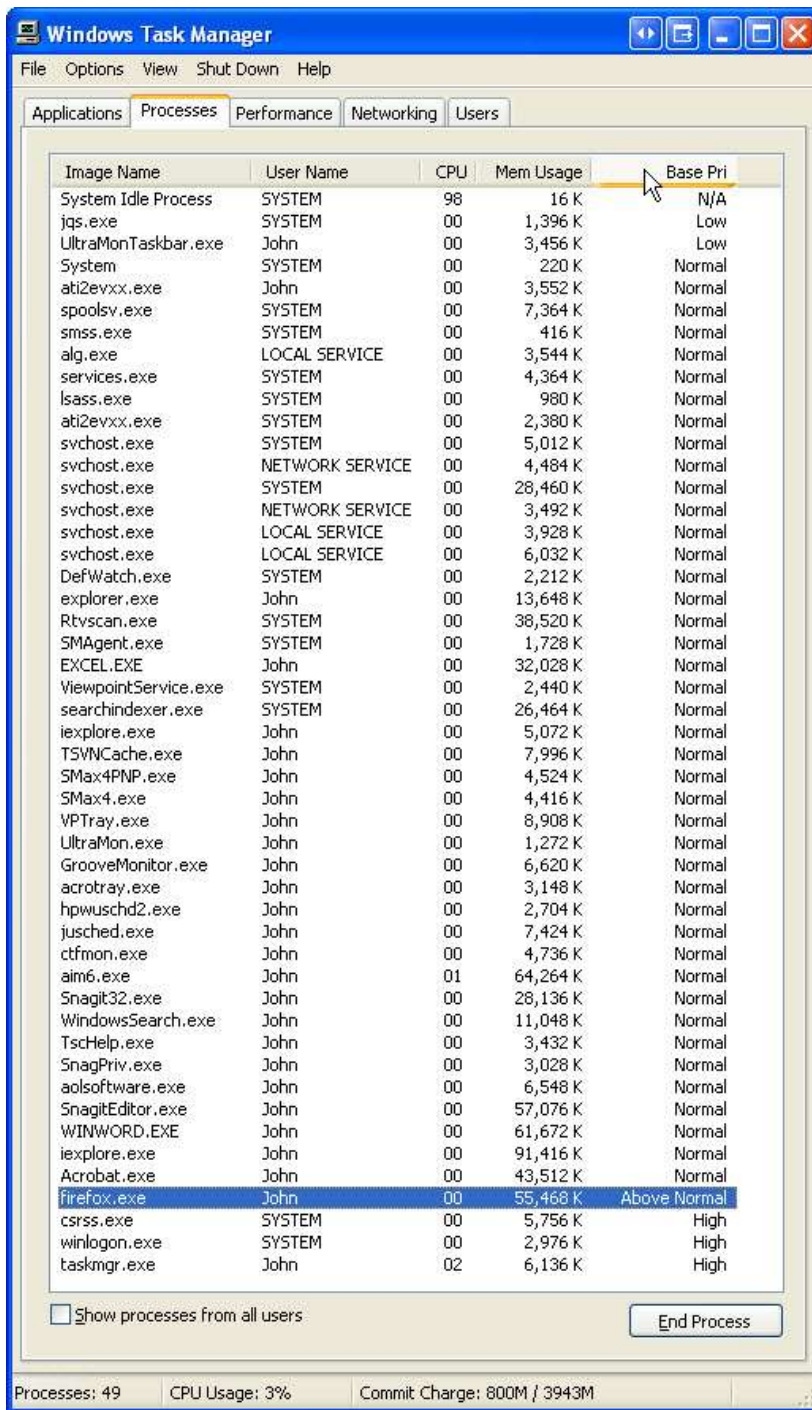
Expand the width of the **Windows Task Manager** window.



Click **View > Select Columns**.



Place a check mark next to **Base Priority** and click **OK**.



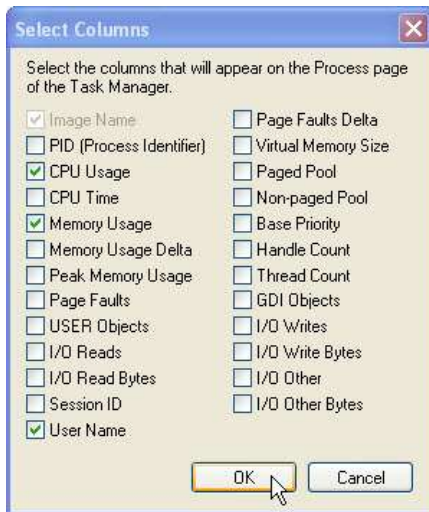
Click **Base Pri**.

Which image name has a base priority of N/A?

List one image name that has a base priority of Above Normal?

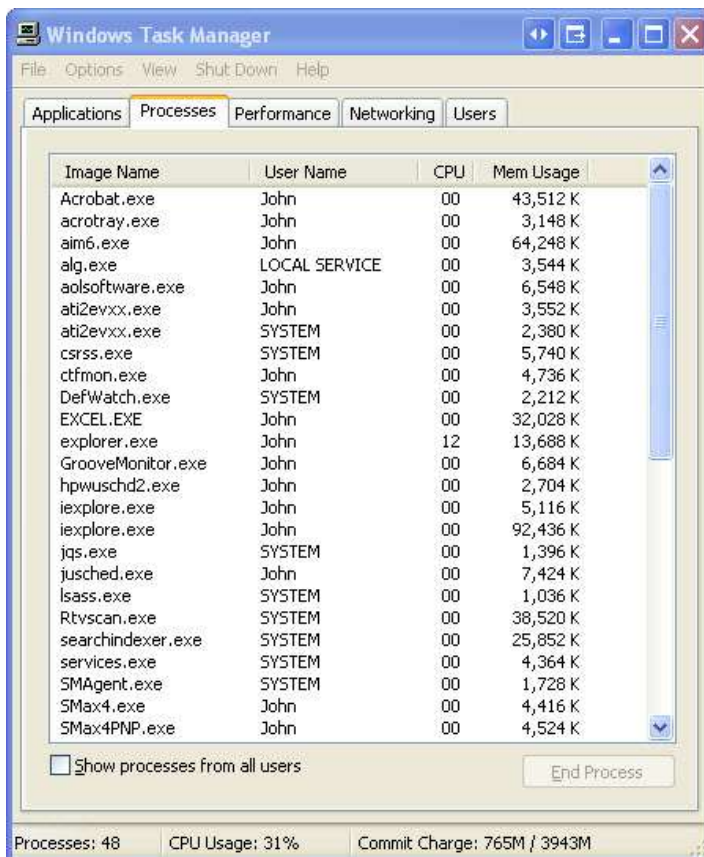
**Step 8**

Reset Firefox.exe base priority to **Normal** > **Yes**.



Click **View** > **Select Columns** > uncheck **Base Priority** > **OK**.

Close Firefox.



Is Firefox listed as a process?