

## IT Essentials 5.0

### 5.3.2.18 Lab - Managing Virtual Memory in Windows XP

#### Introduction

Print and complete this lab.

In this lab, you will customize Virtual Memory settings.

#### Recommended Equipment

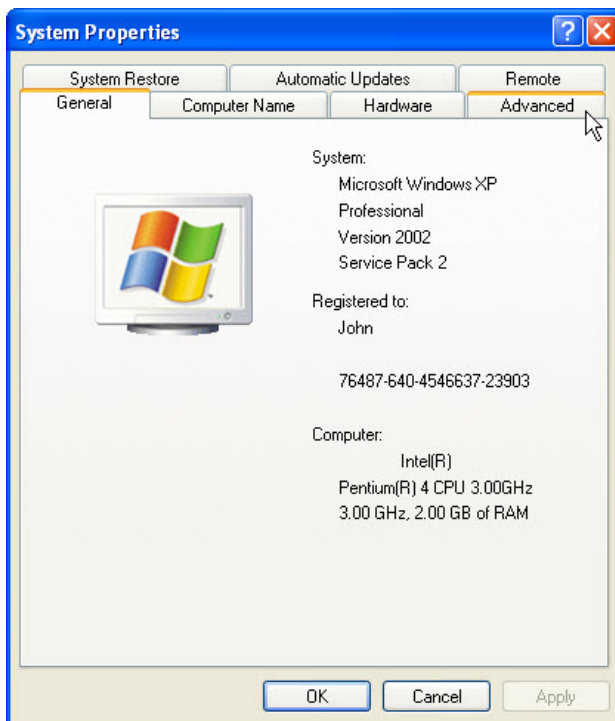
- A computer with Windows XP installed
- The hard drive must have two or more partitions

#### Step 1

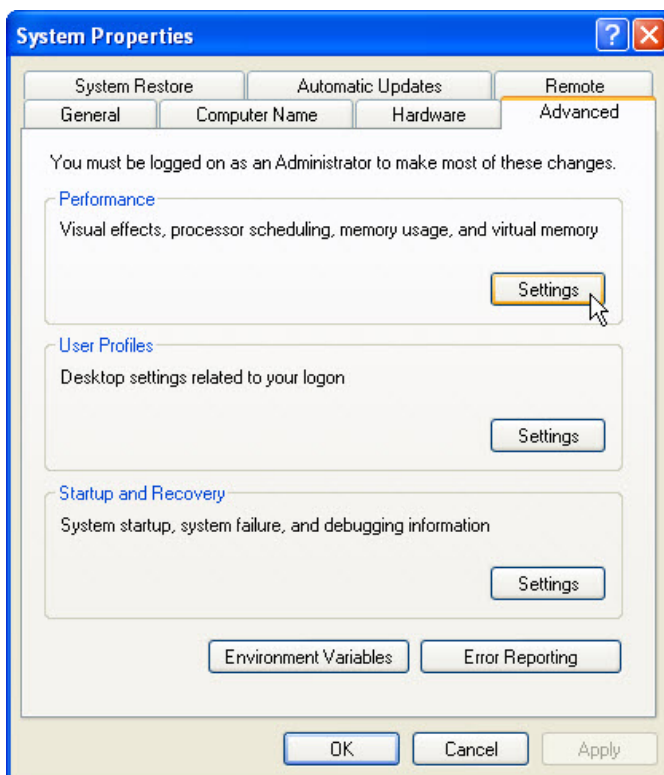
Choose **Start >** right-click **My Computer**, and then click **Properties**.



The “System Properties” window opens.



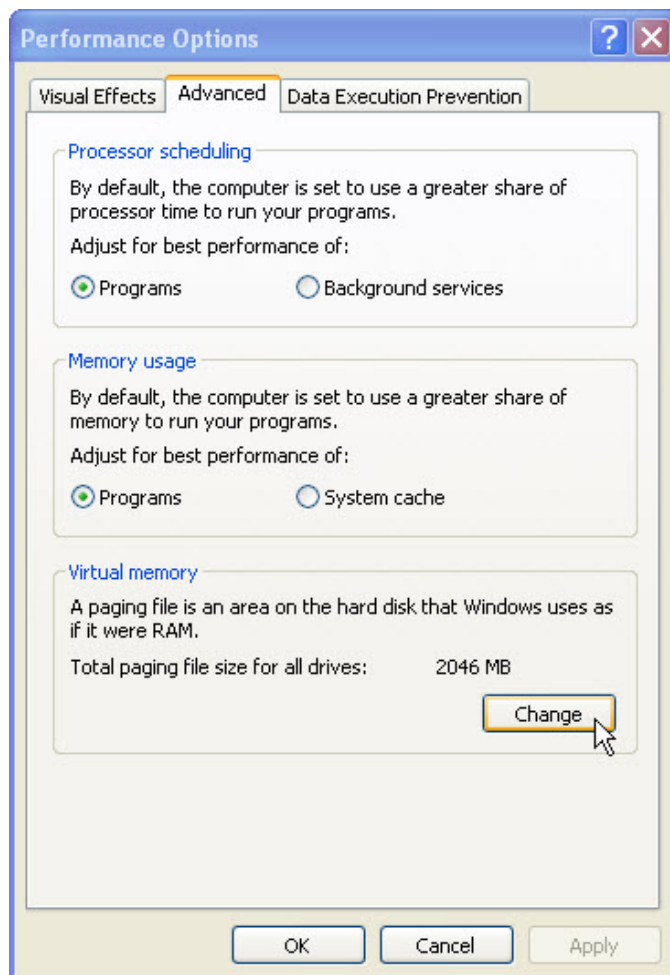
Click the **Advanced** tab.



Click **Settings** in the “Performance” area.

## Step 2

The “Performance Options” window opens.

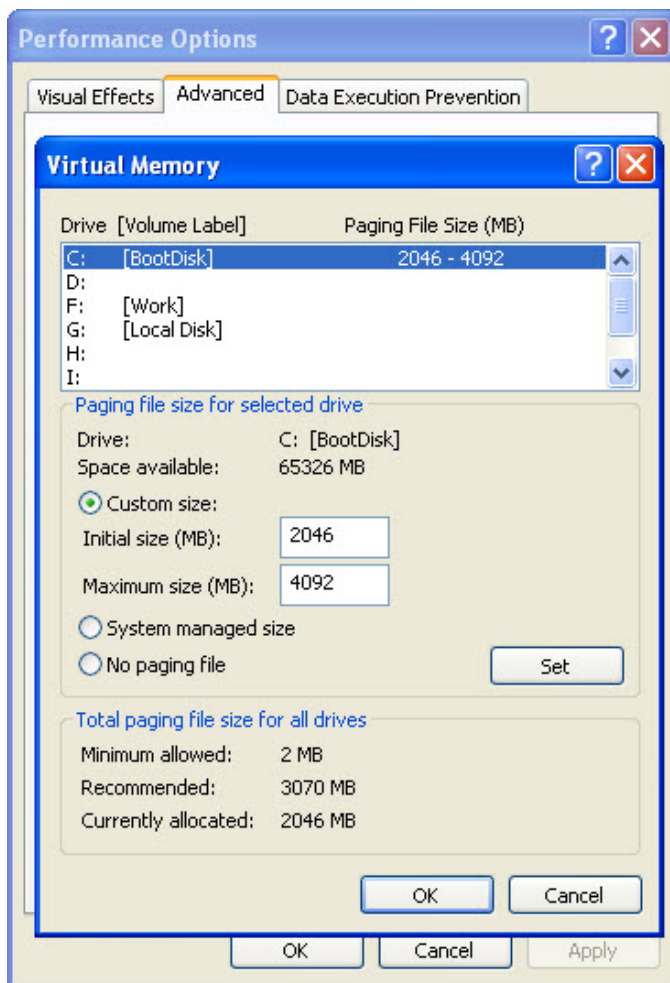


Click the **Advanced** tab.

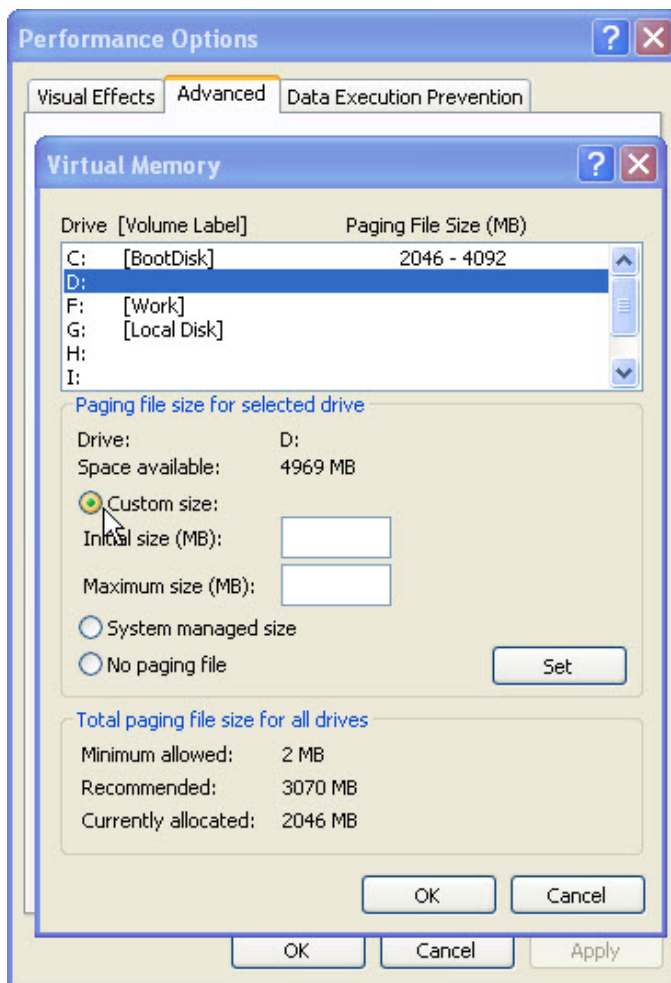
What is the current size of the Virtual Memory (paging file)?

Click **Change** in the “Virtual Memory” area.

The “Virtual Memory” window opens.



What Drive [Volume Label] contains the paging file?



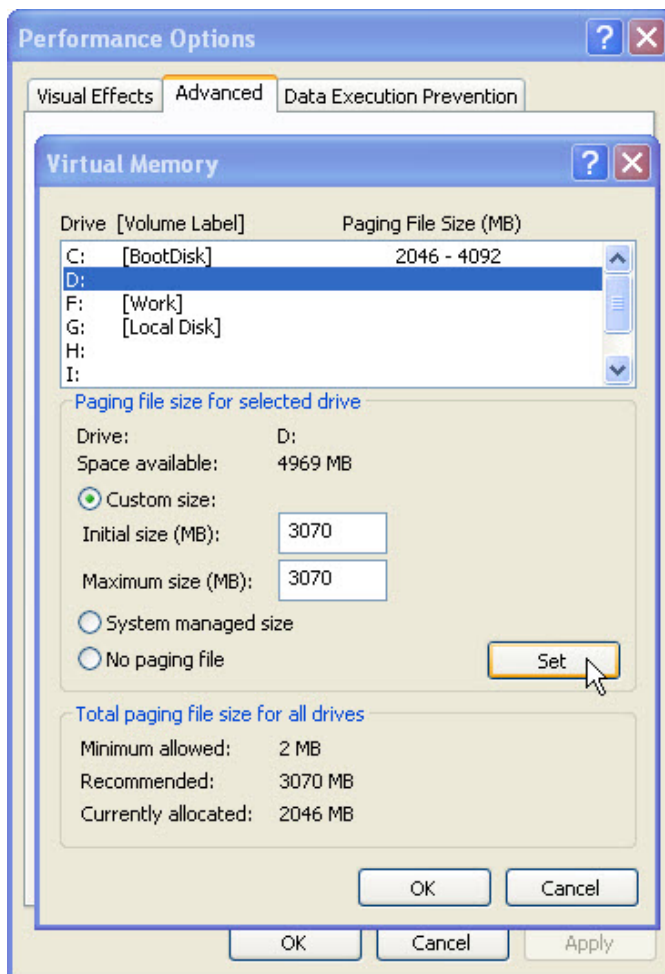
Choose the **D:** drive.

Select the **Custom size** radio button.

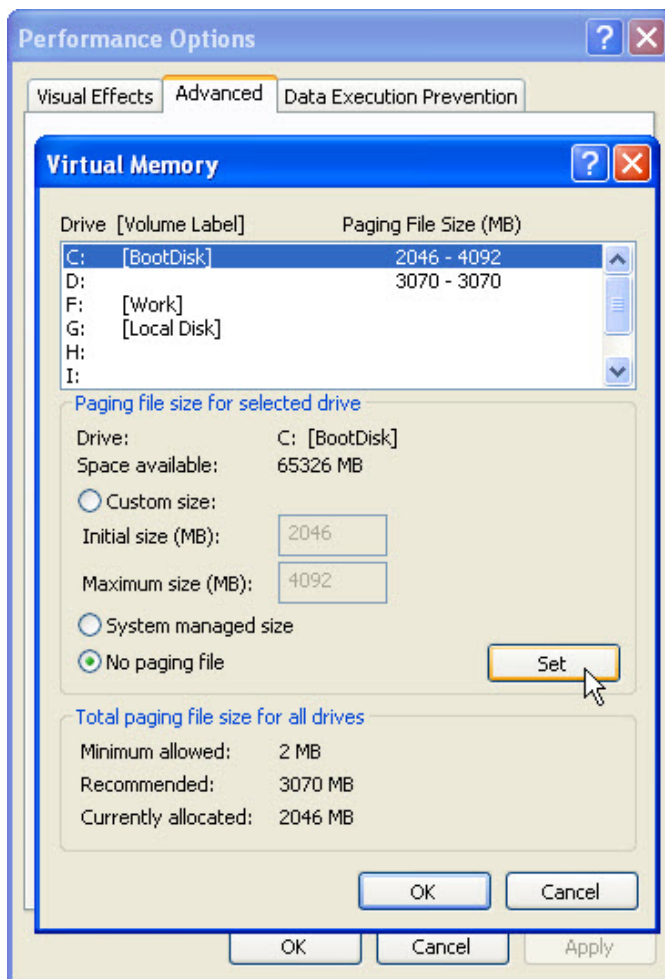
Look at the "Recommended" size in the "Total paging file size for all drives" section of the "Virtual Memory" window.

Type the recommended file size in the **Initial size (MB):** field.

Type the recommended file size again in the **Maximum size (MB):** field.

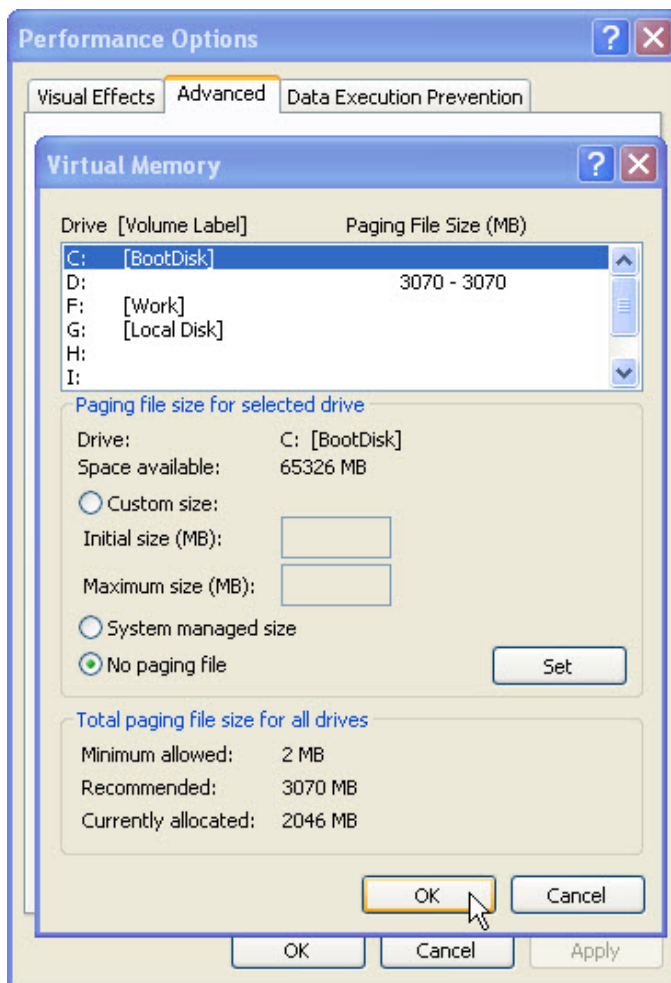


Click **Set**.



Choose the **C:** drive.

Click the **No paging file** radio button, and then click **Set**.



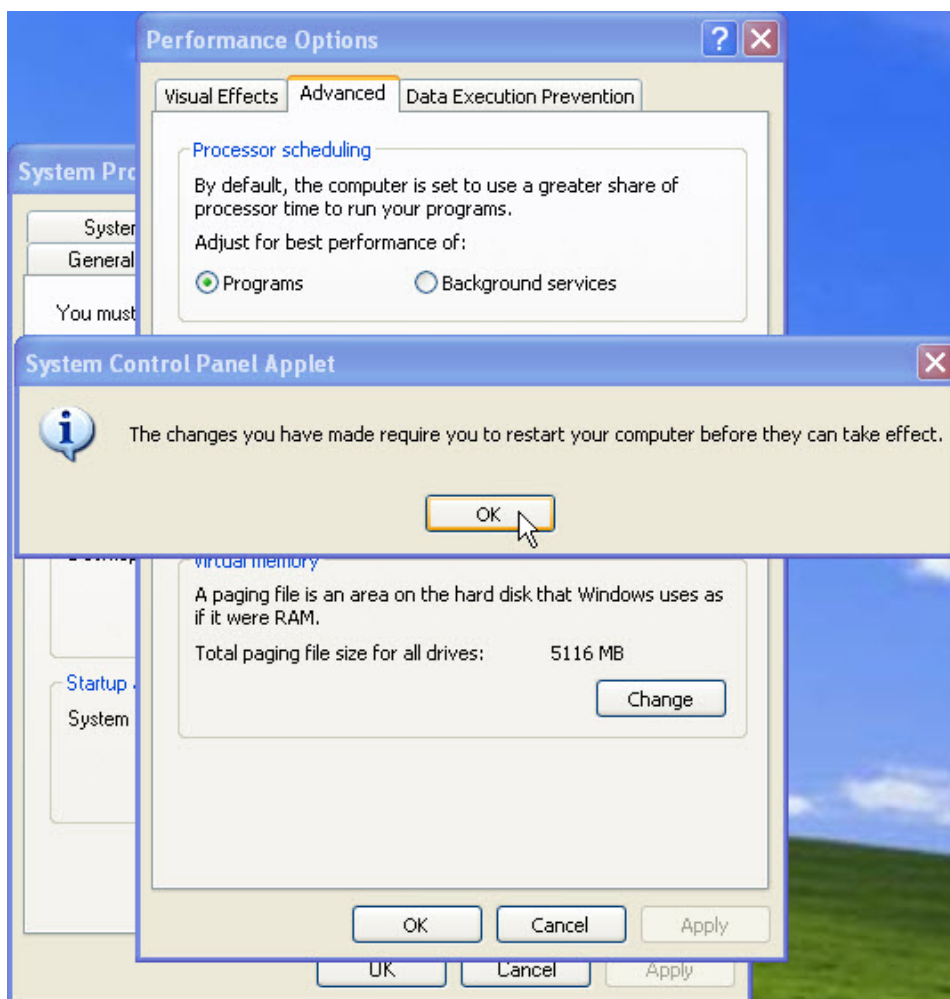
What is the paging file size (MB) for drive C:?

What is the paging file size (MB) for drive D:?

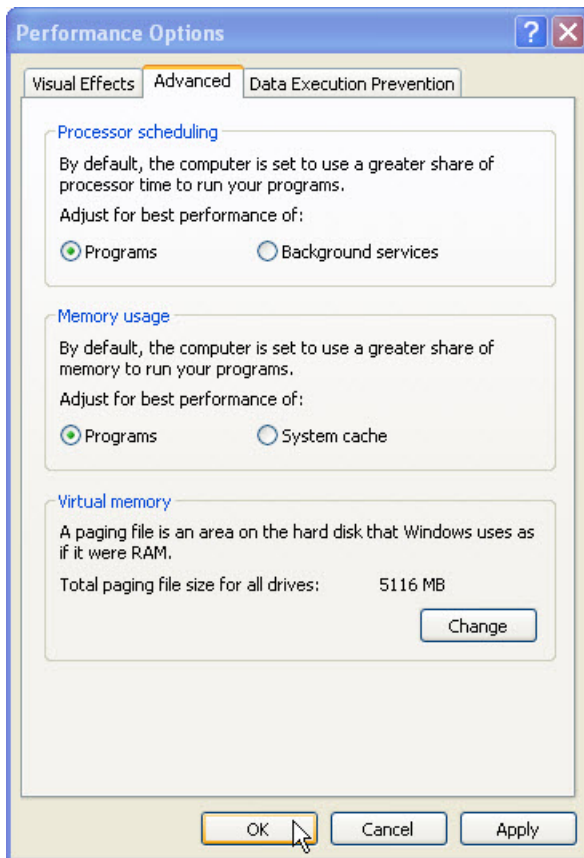
Click **OK**.

The "System Control Panel Applet" message window appears.

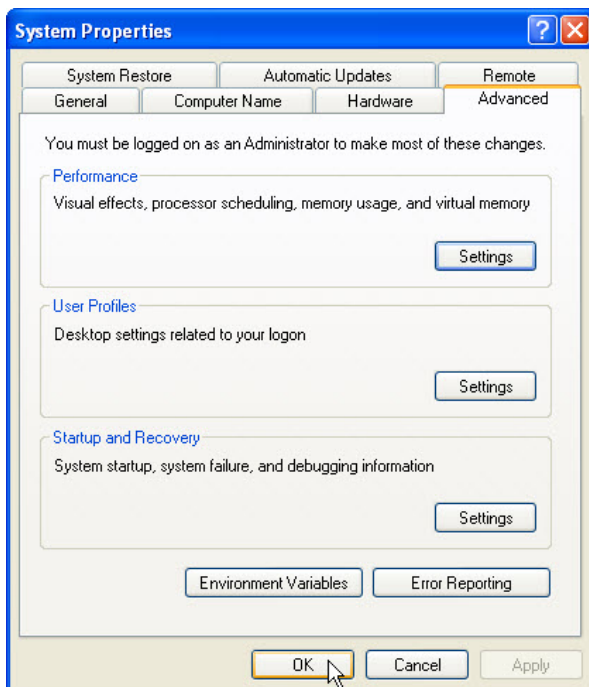




Click **OK** to close the information message window.

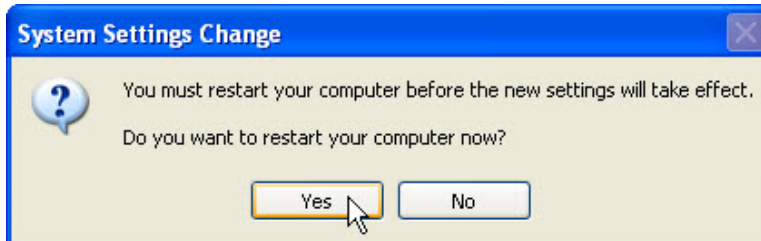


Click **OK** to close the “Performance Options” window.



Click **OK** to close the “System Properties” window.

The “System Settings Change” window opens.

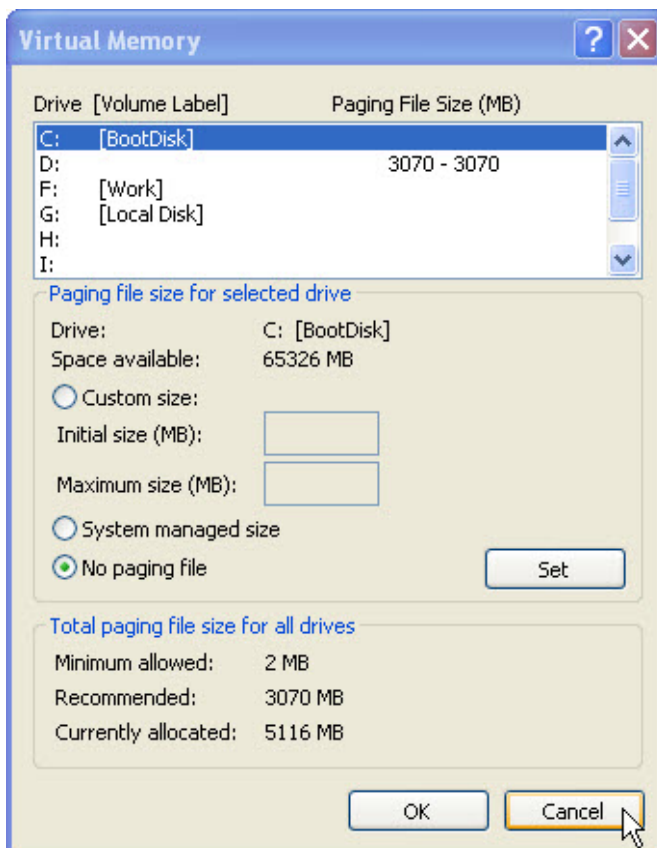


Click **Yes** to restart your computer now.

### Step 3

Log on to Windows as an administrator.

Open the “Virtual Memory” window.



Which Drive [Volume Label] contains the paging file?

**Step 4**

Reset virtual memory to be managed by the system.

Select drive **D:**.

Select the radio button "System managed size", and then click **Set**.

Click **OK** to accept the message.

Select drive **C:**.

Select the radio button "System managed size", and then click **Set**.

Click **OK** to accept the message.

Restart the computer and log off again.